

OPERA THEATRE **OTSL** *of* SAINT LOUIS

2020 ANNUAL REPORT





2020 ANNUAL REPORT

MISSION

Opera Theatre's mission is to shape the future of opera and to connect diverse audiences through its power and beauty. To accomplish our mission, we produce a world-class opera festival, we champion new works, we build new audiences, we educate and engage our community, and we nurture the finest opera artists, artisans, and administrators of each generation. By doing so, we strengthen the cultural and economic vitality of the St. Louis community.

TABLE OF CONTENTS

FROM THE GENERAL DIRECTOR.....	1
FROM THE BOARD CHAIRMAN	2
REMEMBERING PHYLLIS BRISSENDEN	3
CELEBRATING OPERA THEATRE ARTISTS	5
CELEBRATING THE OTSL COMMUNITY	9
#THISISOTSL: PIVOTING TO A DIGITAL SEASON.....	11
CONNECTION AND HOPE FOR STUDENTS AND FAMILIES.....	13
A COMMITMENT TO GREATER EQUITY	15
FINANCIALS	19
THANK YOU.....	21

FROM THE GENERAL DIRECTOR



As I look back over the past year, I am filled with gratitude for the resiliency of our artists, the innovation of our team, and the overwhelming generosity of our community. We started this year with news of a transformational gift from a very dear friend. By leaving a substantial portion of her estate to Opera Theatre's endowment, Phyllis Brissenden secured the company's future, a gift with even greater meaning in this year of uncertainty. Above all, Phyllis was a beloved friend, and we will cherish our memories of her enthusiasm, humor, and genuine care for all she met.

The pages of this report celebrate the inspiring artists who kept our work alive in 2020 under the visionary leadership of Artistic Director James Robinson. I am grateful to Opera Theatre's Board of Directors, led by our extraordinary Chairman Noémi Neidorff, for encouraging us to create in new ways and I am awed by the support and encouragement from so many that has kept our company strong this year. Thank you for your generosity and for your continued belief in the power of opera and in the work and mission of Opera Theatre of Saint Louis.

A handwritten signature in black ink, reading "Andrew R. Jorgensen".

Andrew R. Jorgensen
General Director

FROM THE BOARD CHAIRMAN



Artists needed our support in 2020 more than ever and we needed the inspiration that art brings. I am so grateful for the way our community has continued to respond. The Opera Theatre family has shown remarkable support, flexibility, and dedication this year. You are embracing new plans, learning new technologies, and helping us look ahead to a very bright future — all while showing remarkable care for our artistic community.

I want to applaud the Opera Theatre of Saint Louis team. Under the extraordinary leadership of General Director Andrew Jorgensen, the team has worked tirelessly, finding new ways to create and share art with our community.

This has also been a year of listening and learning. As the first step in developing an institutional equity plan, Opera Theatre completed an in-depth Equity, Diversity, and Inclusion (EDI) assessment and is forming a standing EDI committee to hold the company accountable to advancing these values at every level. You can read more about our commitment to fostering EDI principles across every facet of the company on page 15. Thank you to the many board members, artists, artisans, staff, volunteers, vendors, donors, and community leaders who have given their time, wisdom, and voices to this important process.

Until we can again gather in person, I am sending gratitude and admiration.

A handwritten signature in black ink, reading "Noémi K. Neidorff".

Noémi K. Neidorff
Chairman of the Board of Directors

“Phyllis was a member of our company from the very beginning. *She often referred to Opera Theatre as her family, and she always spoke with particular affection of the deep friendships that she built with my predecessors Richard Gaddes, Charles MacKay, and Timothy O’Leary; our long-time Managing Director of Advancement Nicole Freber; and so many other members of our company across the decades. We knew Phyllis was planning to leave a bequest to Opera Theatre, but we had no idea just how significant it would be. We feel deeply fortunate that this gift allows us to reach for even greater levels of artistic excellence and community impact. As we continue our work on our next strategic plan, which will chart a course to our 50th anniversary, Phyllis’ passion for this company and this art form will be one of our guiding lights.”*

— ANDREW JORGENSEN,
GENERAL DIRECTOR



REMEMBERING PHYLLIS BRISSENDEN

Opera Theatre of Saint Louis lost a dear friend with the passing of life board member Phyllis Brissenden on December 17, 2019. We are inspired by and deeply grateful for her decision to leave Opera Theatre a transformational endowment gift of approximately \$48 million.

A music lover her whole life, Mrs. Brissenden was devoted to Opera Theatre from its very first season in 1976. She also led Opera Theatre’s National Patrons Council from 2010–2017, encouraging opera lovers from around the country to support the organization. While Mrs. Brissenden was quick to support exciting productions, her greatest source of enjoyment was getting to know the singers and staff of Opera Theatre. She showed the same kindness to volunteers, ushers, and garden staff as she did to star singers, and often shared news clippings and family recipes with her OTSL friends.

We miss Phyllis Brissenden, and we will continue to honor her incredible legacy in the years to come.

“Phyllis championed Opera Theatre from its very beginnings, and remained a loyal, devoted fan and supporter throughout her life. Smart, knowledgeable, witty, and extraordinarily humble, Phyllis truly considered Opera Theatre her family. Every season, she made frequent trips from her home in Springfield, Illinois so as not to miss any performances, board meetings, master classes, rehearsals, or workshops. My fellow board members and I count ourselves fortunate to have known Phyllis. We will forever cherish her memory.”

— NOÉMI K. NEIDORFF, CHAIRMAN, BOARD OF DIRECTORS

2020 GERDINE YOUNG ARTISTS

1,091
APPLICANTS
FROM AROUND
THE WORLD

35
GERDINE YOUNG
ARTISTS SELECTED

219
VIRTUAL
COACHINGS

As artists found new ways to create and inspire during this time of separation, Opera Theatre of Saint Louis continued a longtime commitment to cultivate and foster promising young talent on stage and behind the scenes.

FROM STAGE TO SCREEN: A VIRTUAL YOUNG ARTIST PROGRAM

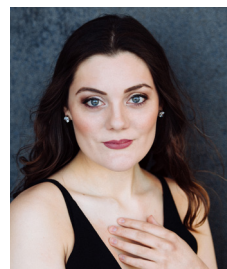
OTSL's **Gerdine Young Artist** and **Richard Gaddes Artist Programs** continue to be among the country's most sought-after programs for young singers, consistently receiving over 1,000 applications for approximately 30 positions. Although the young artists were not able to travel to St. Louis in 2020, the program adapted under the leadership of **Artistic Director of Young Artist Programs Patricia Racette** to include year-long virtual training and professional development opportunities.



Angel Azzarra



Sydney Baedke



Olivia Cosio



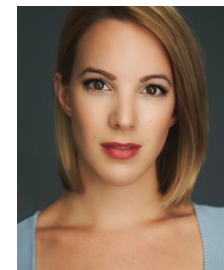
Gregory
Feldmann



Tshegofatso
Clement Baloyi



Avery Boettcher



Susanne Burgess



Katrina Burton



Annie Chester



Taylor Comstock



Shelen Hughes



Christopher Humbert



Ryan Johnson



Evan Lazdowski



Jordan Loyd



Sophia Maekawa

CELEBRATING OPERA THEATRE ARTISTS 2020 GERDINE YOUNG ARTISTS

CELEBRATING OPERA THEATRE ARTISTS

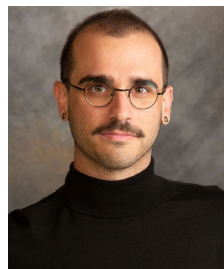
2020 GERDINE YOUNG ARTISTS



Joesph McBrayer



Kyle Miller



Dylan Morrongiello



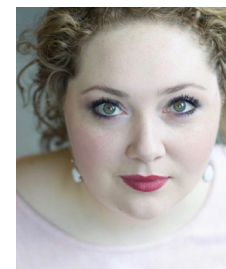
Myka Murphy



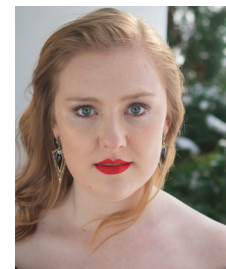
Bianca Orsi



Elliott Paige



Murrella Parton



Meridian Prall



Lindsey Reynolds



Angel Riley



Zaray Rodriguez



Moisés Salazar



Ganson Salmon



Hayden Smith



William Socolof



Luke Sutliff



Boris Van Druff



Jasmin White



Tyler Zimmerman

BEHIND THE SCENES: DEVELOPING TECHNICAL TALENT

The **Emerson Behind the Curtain** and **Browning Technical Fellowship** programs train and develop the next generation of technical artists every year. Opera Theatre was proud to continue this program virtually in 2020, providing sessions with professionals across the field to more than 15 young, aspiring technical artists. Virtual technical work included **costumes, scenery, lighting, wigs, projection, stage direction, budgeting and finance, and stage management.**

CELEBRATING THE OTSL COMMUNITY

In April 2020, Opera Theatre of Saint Louis announced the cancellation of the 2020 Festival Season due to the COVID-19 pandemic and made a commitment to honor 50% of expected income for each of the 258 seasonal members of the company — including singers, artisans, production crew and staff, front of house staff, administrative interns, and our partner, the St. Louis Symphony Orchestra.

This commitment would not have been possible without the support of the Opera Theatre community. We remain deeply grateful to all who supported the 2020 Season Challenge by donating tickets, making new or additional gifts, or reallocating gifts to support our artists.

876

HOUSEHOLDS
DONATED
THEIR TICKETS

◀ 2020 TICKET DONORS

2020 ticket buyers were given the choice to convert their ticket into a donation, a refund, or a credit for future seasons. The response was overwhelming — most households either donated their tickets or converted the funds into a future season credit.

2020 SEASON CHALLENGE

Following the season cancellation, a coalition of Opera Theatre supporters pledged to match up to \$800,000 in ticket donations or new gifts. Their challenge was met and exceeded with more than \$836,000 in ticket donations and new gifts received prior to June 30th. The 2020 Season Challenge was funded by the inspiring generosity of **Noémi & Michael Neidorff**, the **Steward Family Foundation**, **Sally S. Levy & Family**, the **Berges Family Foundation**, and **Andrew Jorgensen & Mark Stuart-Smith**.

WORDS OF THANKS FROM OTSL ARTISTS AND SEASONAL STAFF

The following notes came from Opera Theatre artists and seasonal staff who received settlement payments following the 2020 season cancellation. Without the support of the Opera Theatre community, these payments would not have been possible.

“I wanted to thank you for taking care of your year-round staff and OTSL’s seasonal artists and staff. OTSL has already paved the way by making opera accessible to all, as well as its commitment to new voices and new works, but your announcement today made me especially proud to be part of the OTSL family. I hope many other companies and organizations will follow your leadership.”

“Thank you especially for supporting us financially — this means so much and is truly appreciated. This gesture defines OTSL as a company and community and makes all of us proud to be associated with you.”

“Even as I join the rest of the OTSL family in grief over losing the 2020 season, I want to thank you and the Board of Directors for the care and solidarity you are showing to the entire community in such an unprecedented time. In spite of such loss, your response makes me feel like we are genuinely all in this together.”

“I just want to thank you! My family and I are truly grateful for you and everyone at Opera Theatre for the support for my family during these hard times. I am thankful to be part of a company that cares about their employees and goes above and beyond when times are tough.”

#THISISOTSL: PIVOTING TO A DIGITAL SEASON

Inspired by the steadfast support of the OTSL community, Opera Theatre pivoted quickly to a reimagined 2020 season: #ThisIsOTSL, a Digital Festival. These programs provided an opportunity to connect with our audience during a time of separation while celebrating the artistry of the 2020 season and shining a spotlight on OTSL artists.



◀ FRONT & CENTER

Hosted by Artistic Director of Young Artist Programs Patricia Racette the “Front & Center” series showcased the talents of OTSL’s young artists with mini recitals on Facebook. Intended as a professional development opportunity for young artists and a chance for the Opera Theatre audience to enjoy performances reminiscent of the annual *Center Stage* concert, viewership for this program had one of the widest reaches of the Digital Festival.

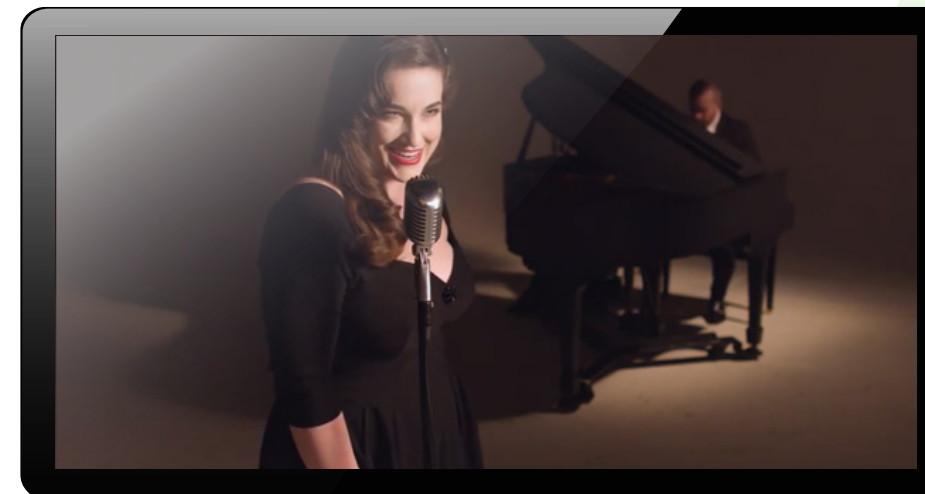


◀ ILLUMINATING OPERA

Hosted by St. Louis Symphony Chorus Director Amy Kaiser, this popular lecture series moved to the radio in 2020 through a partnership with Classic 107.3. Each episode explored the music and history of the planned 2020 season productions.

OPENING NIGHT SPOTLIGHTS ▼

Inspired by Opera Theatre’s Spotlight on Opera series, the Digital Festival’s Opening Night Spotlights brought together 2020 season directors, designers, and singers with General Director Andrew Jorgensen. Each spotlight provided an opportunity to celebrate the planned productions of *Carmen*, *Die Fledermaus*, *Awakenings*, and *Susannah*.



THE REACH OF THE DIGITAL FESTIVAL

24

PUBLIC
EVENTS

35+

DONOR & VOLUNTEER
EVENTS

157,927

PEOPLE REACHED

197,156

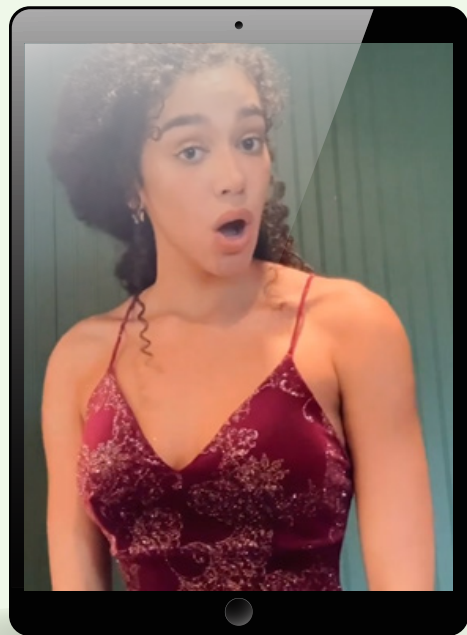
TOTAL MINUTES
OF CONTENT VIEWED

1,760

TOTAL
COMMENTS

CONNECTION AND HOPE FOR STUDENTS AND FAMILIES

Opera Theatre's education programs achieved astonishing reach this year. All in-person programs were reimagined for virtual delivery in the spring of 2020, thanks to the innovation and resilience of the Opera Theatre Education department and dedicated voice faculty. The virtual programs became especially important for students during this time of separation.



\$590,000

IN SCHOLARSHIP AWARDS

260 99%

STUDENTS GRADUATION
RATE

◀ 30 YEARS OF AIT: THE BAYER FUND ARTIST-IN-TRAINING PROGRAM (AIT)

In March, OTSL quickly moved weekly vocal lessons online for students in the Bayer Fund Artist-in-Training Program, which is dedicated to discovering and nurturing talent in local high school students. The AIT Spring Recital, celebrating 30 years of this nationally recognized program, was streamed to more than 3,200 viewers on Facebook and YouTube.

OPERA ON THE GO!

Prior to the pandemic, Opera on the GO! visited thousands of students in schools across the St. Louis area with an adapted version of Rossini's *Cinderella* in fall 2019. Accompanying workshops immersed students in music, movement, and stage makeup.

21

AREA
SCHOOLS

4,350

STUDENTS
SERVED

2

SENSORY-FRIENDLY
PERFORMANCES
FOR STUDENTS WITH
SPECIAL NEEDS

67%

OF STUDENTS
ARE CITY
RESIDENTS

57%

STUDENTS
OF COLOR

2,660

STUDENTS WERE FROM
LOW-INCOME HOUSEHOLDS
(ACCORDING TO FREE/REDUCED
PRICED LUNCH STATS)

OPERA CAMP FOR KIDS ▶

Opera Camp is a week-long, high-energy exploration of music and stagecraft for kids. The program was held virtually in 2020, connecting campers from across the country with special guests who introduced students to Shakespeare, costumes, stage makeup, and comedy in opera.

Students from Across the Country: For the first time, OTSL welcomed students from five states for virtual Opera Camp.

Resources for the Virtual Classroom: Teachers who participated in the program reported the experience was an excellent opportunity that helped to prepare them for the virtual classroom later in the fall.



A COMMITMENT TO GREATER EQUITY

In addition to economic and health crises in 2020, our country also witnessed tragic losses that continued a long history of racial injustice and systemic inequities. In June, Opera Theatre made a public statement in support of the Black Lives Matter movement:

“...we stand with you and we will use our voice to amplify yours. Allyship is not an identity — it is an action, requiring the work of constant growth and improvement. We commit ourselves to that work today and always. We promise to listen, to educate ourselves, and to change so that we help create a world that is equitable, just, and safe for all. And we encourage you, our community, to hold us accountable now and in the future...”

Since making this statement, the company has continued to identify opportunities for greater equity through a thorough audit and assessment of the company’s EDI (Equity, Diversity, and Inclusion) practices. Through this audit, OTSL heard from more than 150 individuals and examined all levels of the company to study, assess, and develop a comprehensive report detailing broad recommendations for advancing equity, diversity, and inclusion at Opera Theatre.



CLAYCO FUTURE
LEADERS
FELLOWSHIP

- ▲ In September 2020, Opera Theatre announced two new initiatives to further the company’s commitment to equity, diversity, and inclusion, both onstage and in administration. The **Clayco Future Leaders Fellowship** will cultivate future leaders in arts administration who identify as BIPOC or other backgrounds that are historically underrepresented in opera. Opera Theatre also announced the creation of the **Voices Fund: A Path for Empathy, Dialogue, and Change**.

We are encouraged by the momentum of these first steps in an ongoing journey, and are committed to continuing this work in the months and years ahead.

A COMMITMENT TO GREATER EQUITY

INTRODUCING THE VOICES FUND ▼



In September, Opera Theatre announced the creation of the **Voices Fund: A Path for Empathy, Dialogue and Change**. Launched with the

generosity of OTSL's 2020 gala donors who chose to direct over \$800,000 toward this purpose following the cancellation of the in-person event, the **Voices Fund** will provide financial resources to ensure Opera Theatre pursues innovative, impactful projects celebrating the bold voices within our community. It aims to amplify voices in St. Louis and beyond by supporting initiatives that create dialogue with the diverse voices and concerns of our region now and for years to come. On behalf of our 2020 Gala Chairman Cindy Brinkley, Chairman of the Board of Directors Noémi Neidorff, and General Director Andrew Jorgensen, we thank the Voices Fund's Inaugural Sponsors — their generosity will have a lasting impact on OTSL's work!

- ◀ The first project supported by the Voices Fund was **Songs for St. Louis: A Concert in the Commons**, a co-production by Opera Theatre of Saint Louis and Nine Network, which aired on Nine PBS in November 2020.

▼ ARTS UNITED STL: COMING TOGETHER THROUGH ART

In St. Louis and across the country, individual artists saw their livelihoods disappear overnight. Performing arts were among the first public events to be cancelled due to the pandemic and will be among the last to return to full operation. The Regional Arts Commission's Artist Relief Fund was set up to protect the most vulnerable in our arts community until it is safe for all of us to return to the work we love.

In the spring of 2020, Opera Theatre convened a group of 16 local arts organizations for an at-home benefit to support local artists. Produced by Opera Theatre of Saint Louis, Arts United STL was streamed free to the public on Sunday, May 31 and raised over \$360,000 for local artist relief.



785
DONORS

600
GRANTS FOR
LOCAL ARTISTS

\$360,000
RAISED



BIG MUDDY
DANCE COMPANY



THE BLACK REP

CIRCUS FLORA

COCA

Jazz

Metro THEATRE
COMPANY

THE MUNY

The Rep
REPERTORY
THEATRE
ST. LOUIS

**SAINT
LOUIS
BALLET**

**St. Louis
CHILDREN'S
CHOIRS**

**ST. LOUIS
SHAKESPEARE
FESTIVAL**

silo

**St. Louis Symphony
Orchestra**

**THE
SHELDON**

STARGES
ST. LOUIS

**TW
STL**

FINANCIALS

STATEMENT OF FINANCIAL POSITION*

ASSETS

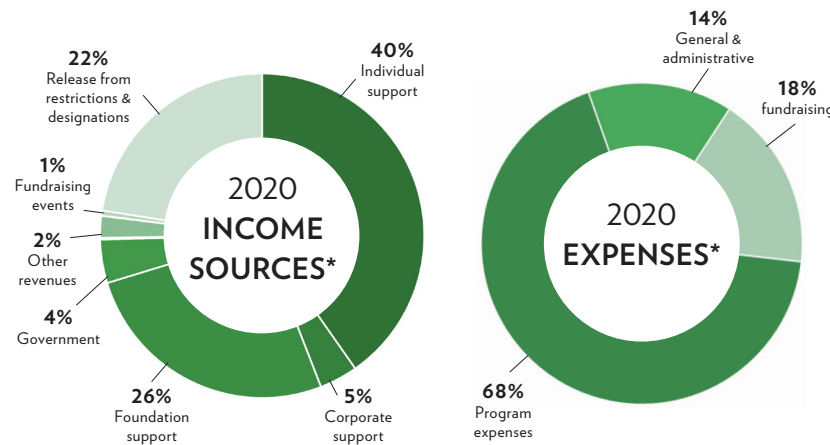
Cash & cash equivalents.....	\$3,012,877
Investments	\$77,543,293
Contributions receivable, net	\$3,441,477
Bequests receivable, net.....	\$6,411,382
Note and other receivables.....	\$169,297
Beneficial interest in lead trust	\$509,728
Prepaid expenses.....	\$584,427
Facilities and equipment, net.....	\$3,690,382
Total assets	\$95,362,863

LIABILITIES

Accounts payable and accrued expenses	\$304,004
Box office liability	\$219,138
Deferred revenue	\$13,160
Annuity liability.....	\$29,300
Notes payable	\$362,400
Total liabilities	\$928,002

NET ASSETS

Without donor restrictions.....	\$9,938,953
With donor restrictions.....	\$84,495,908
Total net assets.....	\$94,434,861
Total liabilities and net assets	\$95,362,863



*As of September 30, 2020. All FY2020 ratios were significantly influenced by the pandemic and season cancellation.

STATEMENT OF ACTIVITIES*

REVENUES AND SUPPORT

	w/o Donor Restrictions	w/ Donor Restrictions	Total
Grants, contributions, and bequests	\$5,100,254	\$51,116,810	\$56,217,064
Performance admissions	\$13,801	-	\$13,801
Benefits	\$43,577	-	\$43,577
Program advertising	\$2,360	-	\$2,360
Rentals and other activities	\$196,883	\$194	\$197,077
Change in value of split interest agreements	\$580	(\$9,758)	(\$9,178)
Net assets released from restrictions	\$2,848,162	(\$2,848,162)	-
Total operating revenue and support	\$8,205,617	\$48,259,084	\$56,464,701

EXPENSES

Program services	\$4,545,922		\$4,545,922
General and administrative	\$977,981		\$977,981
Fundraising	\$1,181,008		\$1,181,008
Total expenses	\$6,704,911		\$6,704,911

NON-OPERATING REVENUE & EXPENSES

Investment return, net	\$290,048	\$952,109	\$1,242,157
------------------------	-----------	-----------	-------------

CHANGE IN NET ASSETS

\$1,790,754	\$49,211,193	\$51,001,947
--------------------	---------------------	---------------------

*As of September 30, 2020. All FY2020 ratios were significantly influenced by the pandemic and season cancellation.

THANK YOU

2020 PATRONS AND FRIENDS OF THE FESTIVAL

This list represents contributions of \$1,000 or more made to the Annual Fund in fiscal year 2020 (October 1, 2019 – September 30, 2020). We are deeply grateful to our donors at all levels — and to those who supported capital and endowment projects — and regret that we do not have space to recognize all donors here.

LEADERSHIP CIRCLE: \$100,000+

Anonymous Donors (2)	Lelia & David Farr #
Arts & Education Council of Greater St. Louis	Sally S. Levy & Family #
Bayer & Bayer Fund	The Andrew W. Mellon Foundation
James Berges & Elizabeth Mannen Berges #	Noémi & Michael Neidorff #
Berges Family Foundation	Regional Arts Commission
Phyllis Brissenden ⚡	David & Thelma Steward & Steward Family Foundation
Centene Corporation & Centene Charitable Foundation	The Wallace Foundation
	Whitaker Foundation

DIRECTORS' CIRCLE: \$50,000-\$99,999

Anonymous Donor (1)	William T. Kemper Foundation & Commerce Trust Company
Mark & Pat Burkhardt	Leigh & Jean Mason #
Clayco	Missouri Arts Council
Emerson	National Endowment for the Arts
Mr. & Mrs. Irl F. Engelhardt & Engelhardt Family Foundation #	OPERA America, Inc.
The Margaret Blanke Grigg Foundation	Emily Rauh Pulitzer #
Patricia G. Hecker ⚡ & Hecker Family Charitable Fund of the St. Louis Community Foundation	Dr. Jeanne & Rex Siquefield #

PRODUCTION UNDERWRITER PATRONS: \$25,000-\$49,999

Ameren	Pershing Charitable Trust
Armstrong Teasdale LLP	Roy Pfautch
Cynthia J. Brinkley	The Pulley Foundation
Phoebe & Spencer Burke #	The Mabel Dorn Reeder Foundation, Mabel L. Purkerson, M.D., Trustee #
Kim & Tim Eberlein #	Shepard Family Foundation
Edward Jones	Mr. ⚡ & Mrs. Donald J. Sher
Robert & Jane Feibel #	Webster University*
Alison & John Ferring & John & Alison Ferring Family Foundation #	Wells Fargo Advisors
Nancy & Ken Kranzberg #	Robin & Tim Wenworth
Karen & Mont Levy #	Edward H. & Rosemary Young Fund of the St. Louis Community Foundation
MacCarthy Foundation	
Mercy	

ARIA PATRONS: \$15,000-\$24,999

Thriess & Lynn Britton #
Edward Chase Garvey Memorial Foundation
Bettie S. Johnson #
Gene Kornblum #
PNC Arts Alive
John H. Russell #
Ann & Bill ⚡ Sullins #
Mary Susman & Tom Herm
Stephen Trampe & Jenny Gupta #
Nina Coulter Ware
Dr. Virginia V. Weldon & Mr. Francis Austin #

SPONSOR PATRONS: \$10,000-\$14,999

Anonymous Donor (1)
Joyce Aboussie
Dana Brown Charitable Trust, U.S. Bank Trustee
Salvatore Comado ⚡
Laura & Norman Eaker
Dorothy & Billy Firestone #
Marilyn & Sam Fox & the Sam & Marilyn Fox Foundation
Edes P. Gilbert #
Mrs. Ronald A. Holtman & Advanced Nursing Services, Inc. #
Heather Hunt-Ruddy
Husch Blackwell LLP
Mary Ranken Jordan & Ettie A. Jordan Charitable Foundation

⚡ In Memoriam * In-kind # 2020 Ticket Donor ⚡ Intermezzo Society

THANK YOU

2020 PATRONS AND FRIENDS OF THE FESTIVAL

continued from page 22

SPONSOR PATRONS: \$10,000-\$14,999

Mrs. William S. Knowles	Adrienne & Russ ⚭ Patton #
Joanne Kohn #	Georgia C. Pettus #
Ann Lee Konneker ⚭	Jan Paul Richter &
The Thomas A. Kooyumjian	Ellen von Seggern Richter
Family Foundation	Allison W. Roberts 🎵
Mr. & Mrs. Lawrence Langsam #	Mr. & Mrs. Robert L. Scharff, Jr. #
Sharon Lapin	Sondra Schlesinger
John Frank Lesser #	Mary Schoolman &
J. David & Lucy S. Levy #	Clemence S. Lieber Foundation #
Joseph ⚭ & Carolyn Losos #	Howard & Sarah D. Solomon
Mr. & Mrs. Sanford N. McDonnell	Foundation
Foundation & Veronica &	Anna Ahrens & Dr. Jamie Spencer #
Randy McDonnell	Franklin F. Wallis #
Dr. & Mrs. Robert J. Myerson #	Phoebe Dent Weil
Dr. Robert Packman &	Sharon & Elliot Zucker #
Leonard Powers #	

PRODUCER PATRONS: \$7,500-\$9,999

Anonymous Donor (1)
Lee & Alexandra Benham #
Mr. & Mrs. Robert H. Craft, Jr.
Sara Epstein #
Richard Gaddes
Mrs. Joseph F. Gleason
Dr. Ann Johanson ⚭
Karen ⚭ & Harry Knopf #
Pam & Jim Krekeler #
Danny & Susan Ludeman
Don & Dee Pavelka
Allen & Merry Richon
Linda & Bruce Ryder #
Marsha & William C. Rusnack
The St. Louis Trust Company
Ellen & Bill Yeckley #

BENEFACTOR PATRONS: \$5,000-\$7,499

Anonymous Donor (1)	Robert H. Duesenberg	Pinnell Foundation
David & Melanie Alpers #	Enterprise Holdings Foundation	Dr. Mary Anne Rudloff #
Louis D. Beaumont Fund	Rabbi Dr. Jay & Erika ⚭ Goldberg #	Dr. David Sewall & Jeff Kapfer #
No. 1 of the St. Louis	Mike & Laura Herring	Barbara & Gene Spector #
Community Foundation	Janet & Andy Hoyne	James V. & Susan S. Stepleton
Lee Bohm & The Milford &	Mr. & Mrs. David W. Kemper &	Mary Strauss #
Lee Bohm Charitable Foundation	David Woods Kemper Foundation	Mr. ⚭ & Mrs. Robert Tancer
Mr. & Mrs. Stephen F. Brauer	Jo Ann T. Kindle	Mr. & Mrs. Mark C. Throdahl #
Pamela Buell	Gerald M. Kowarsky	Susan & Ben Uchitelle
The Aaron Copland	Mr. & Mrs. John Peters	U.S. Bank
Fund For Music	MacCarthy # & Ruth Peters	Donna Wilkinson
Professor Adrienne Davis #	MacCarthy Trust	W. Grant Williams III & Williams
Bill Dolan &	Mrs. John S. Meyer #	Family Charitable Fund of the
Suzanne Bromschwig Dolan #	Liz & Brian Mischel & Melissa	St. Louis Community Foundation
Richard & Phyllis ⚭ Duesenberg	Wohlwend #	

⚭ In Memoriam
* In-kind
2020 Ticket Donor
🎵 Intermezzo Society

THANK YOU

PATRONS: \$2,500-\$4,999

Anonymous Donor (1)	The Hon. Bruce Buckland	Marti & Bob Fowler	Gayle Jackson#	Jack Austin Miller	The Saigh Foundation	Susan & Peter Tuteur #
Donna & Harvey Allen	Buron F. Buffkin &	Jeffrey & Lotta Fox	Diane & Paul Jacobson	Erie Mills & Thomas Rescigno #	Annemarie & Matt Schumacher 🎵	George & Betsy Vogt #
Robert C. Anderson #	Donn Kleinschmidt, M.D. #	Don & Margie Franz	Andrew Jorgensen &	Terri Monk, M.D. &	Mr. & Mrs. Henry L. Schweich	Robert & Nancy
Julia B. Bamburg 🎵	Amanda Trudell Cambridge &	Mr. & Mrs. Martin E. Galt III &	Mark Stuart-Smith	B. Craig Weldon, M.D. #	Kathy Sears, in memory	Wagoner #
Gailya & John Barker #	Paul Cambridge 🎵	The Jackes Foundation	Bill Kumke	Mr. & Mrs. Jean-Paul Montupet	of Frances & Walter Sears &	Peter J. Wender #
Tania Beasley-Jolly & William Jolly	Elaine Coe #	Ann & Randy Getz	Sally Lefler	Julia K. Muller &	Florentine Friedman	Stuart & Susie
Dr. & Mrs. 🎵 Martin Bell #	Mrs. P. Terence Crebs #	Jan & Ronald Greenberg	Mr. & Mrs. Ned Lemkemeier #	Earl K. Shreckengast #	Linda Seibert #	Zimmerman
Pam Belloli & Dave Shimek #	Crystal & Patrick Dallas 🎵	Melissa Harper & Charles Moye	Drs. Laurence & Edith Levine #	J. Matthew Pantaleoni #	Eve Simon	
Marie-Hélène Bernard	Dr. William H. Danforth 🎵	Donna & Robert Heider #	Andrew S. Love #	Marti Reichman #	Stephen W. Skrainka #	
Rudi J. Bertrand & Paul A.	Mr. & Mrs. John E. Evans III	Carolyn Henges &	Joe & Alice Maffit	Lee & Nancy Reycraft	Raymond G. Slavin M.D. #	
Williams, M.D. #	Greg & Prissy Evans	Jay Henges Charitable Trust #	Elizabeth Mannen #	Elizabeth 🎵 & Richard Robb #	Janie & Sandy Sommer #	
June R. Bierman	Sara & Darryl Fabick #	Arnold & Myrna Hershman #	John G. W. McCord	Mrs. Robert L. Rosenheim &	Georgia Streett #	
Elaine & Harold Blatt #	Ann Faget #	Alfred & Marilyn Holtzer #	Mrs. S. Lee A. McMillan	Rosenheim Charitable	Mr. & Mrs. V. Raymond	
Drs. Nanci & James Bobrow	Melanie & Anthony Fathman, M.D. #	Jeannette R. Huey #	Sedgwick Mead, Jr. &	Family Foundation	Strangoener	
Catherine S. Bollinger #	Keith & Ann Fischer #	Phyllis R. Hyken #	Catherine Perry #	Ann R. Ruwitch &	Peggy Walter Symes #	
Mr. 🎵 & Mrs. B. A. Bridgewater, Jr. #	Janice & Bill Forsyth #	Margaret & Martin Israel #	William D. Merwin #	John Fox Arnold #	Mr. & Mrs. E. R. Thomas, Jr. #	
				Alan & Marilyn Sachs		

🎵 In Memoriam
* In-kind
2020 Ticket Donor
🎵 Intermezzo Society

THANK YOU

GUARANTORS: \$1,000-\$2,499

Anonymous Donors (3)	Sally Brayley Bliss & Jim Connett #	Mr. ♂ & Mrs. Don R. Carlson	David & Susan Dobmeyer #	Nicole & Keith Freber #	Mrs. Gerard K. Gunther, Jr.	Mark Stacey #	Fran & Norman Leve
William Aitken #	Eugenie R. Bonte #	Dr. Anne Carman	Mr. & Mrs. Arnold W. Donald	Nancy E. Friedland, in memory	Frank J. Guyol III	Alan W. Hopefl #	Mary Jo & Jerry Liberstein #
Anita ♂ & Gene Adam	Radine & Ben Borowsky #	Mr. & Mrs. Eric Carmichael #	& Arnold & Hazel Donald Fund	of Waldo & Lucille Friedland	Rik & Gail Hafer #	Linda Horne & Daniel Phillips #	The Stanley L. &
Jan & Larry Albus	Dr. Michael R. Borts & Dr. Mary	Tobie Chapman	of the St. Louis Community	Ronald & Cheryl Fromm	Mr. & Mrs. Stephen C. Hall #	Dr. & Mrs. John W. Hubert #	Lucy Lopata Charitable
H. Dieter & Karla Ambos	Gorman #	Robert & Jane Clark #	Foundation	Keith H. Fulling &	Mark Halton & Toni Kutchan #	Mr. & Mrs. David H. Hutchinson #	Foundation
Linda Apicello #	Inge Bretherton #	John Michael Clear &	Dr. & Mrs. James W. Donnelly #	Deborah J. Gersell #	Franklin & Rachel Haspiel #	Rosalyn & Charles Lowenhaupt #	
Robert O. & Susan F. Appleton #	Martha Brewer & Calvin Bentley	Isabel Marie Bone #	Quintus L. Drennan, Jr.	Ann M. Fusz #	Louis Hawn #	Roger & Lynn Irvine	Charles MacKay
Shannon Bagley & Ryan Tusek ♪	Charitable Foundation Trust #	Vicki & Brian Clevinger	Kitty Drescher	Ellen M. Fusz #	Frank Jacobs & Marylen Mann #	Erin Mahony & Jason Simon ♪	
Mrs. Walter F. Ballinger II #	Mr. & Mrs. Richard Brickson #	Karen Coburn	Mrs. Leo Drey #	Walter & Nancy Galvin	Marjorie Eddy Johnson #	Marcela Manjarrez # ♪	
Tony Bardol	Arthur P. Brigham III & Ina	Dr. Richard Cote #	Hope & Julian ♂ Edison	Mr. & Mrs. Anthony Garnett #	Nanette K. Johnson &	Raymond J. Martin #	
Harriet Baron #	Tornallyay #	Bertram B. Culver III	Dr. & Mrs. Charles Ettelson	Joseph E. Geist	Glen N. Yonetani #	Dr. John E. Mazuski	
Anthony Bassett	Lee Broughton &	Dr. Rand E. Dankner #	Alan R. Fiddleman	Elaine Gernstein #	Mary H. Karr #	Mrs. Lansden McCandless, Jr. #	
Ann Bauer ♂	Christine Taylor Broughton	Diane Dark ♪	Louise Flick & William True #	Bettie Gershman ♂ & Gershman	Richard & Shirley Knight	Pat & Brigid McCauley	
Mr. ♂ & Mrs. Peter F. Benoist	Mary I. Brown #	Dr. Carlos C. Daughaday	Drs. Cynthia Florin & Andrey Shaw	Foundation	Stephen E. Kraft #	Diane McCullough #	
Mr. & Mrs. Barry Beracha	Barbara M. Bryant	Dr. Debbie Depew &	Gretta Forrester & Gretta	Robyn Gilliom #	Bob & Marcia Lange #	The McGregor Family #	
Sharon Biegen &	Linda Burns	Mr. Brad Moore #	Forrester Fund of the St. Louis	Joan Goodson ♂	Mr. & Mrs. Mark Lawson	Brenda K. Melson #	
Brian Vandenberg #	Paul & Elissa Cahn &	Mary & Wallace ♂ Diboll #	Community Foundation	Michael L. & Paula E. Gross	Terry Lay, in memory	Charles E. Merrill &	
	Paul & Elissa Cahn Foundation		Gerard Frankenfeld		of Jerry Boyer		
					Debra Hollingsworth &		

THANK YOU

continued from page 26

GUARANTORS: \$1,000-\$2,499

Carol A. Rutter #	John Howard Percy	Heidi & Win Reed	Tom & Ulrike Schlafly & Sycamore Tree Charitable Fund of the St. Louis Community Foundation	Mary Ann & Andrew Srenco ♪	Rowena B. Van Dyke	Francesca Zambello & Faith Gay
Laura & John Meyer #	Cindy & Sandy Peters & The Peters Family Fund	Trevor D. Reese, Jr.	James & Susan Schmalz #	Linda Stark	Virgil & Sandra Van Trease #	
Andrew J. & Roxanne T. Miller	James D. ♂ & Joy M. Pierce #	Patricia J. Rice-Hellmuth & George Hellmuth #	Sandy Schonwald #	Mr. & Mrs. Bill Stebelski	James Viscardi & Lisa Brubaker #	
Mr. & Mrs. Stephen D. Mitchell	Harriet & Philip Polster #	Don J. Riehn ♂ & Jon Goeders	Linda E. Schulte	Dr. ♂ & Mrs. ♂ Philipp A. Stoeberl #	Carol & Tom Voss	
Mr. & Mrs. James R. Moog	Dr. & Mrs. ♂ John A. Powell	Peggy & Jerry Ritter	Janice & Stephen Seele #	Molly Strassner #	Barbara & David Ware #	
Tracy & Nate Moore ♪	Doris B. Pree ♂ #	Kathleen S. & John C. Rorris #	R.A. Seeliger	J. Kennard Streett	Grace T. Weber ♂	
Mr. & Mrs. William Morris & The Cove Point Foundation	Mr. & Mrs. J. L. Price #	Mr. & Mrs. Alan C. Rosenkoetter #	Shelley Seifert	Bob ♂ & Liza Streett	Sue Webster #	
Lucy Morris #	Madelon Price #	Al & Martha Roux	Michael & Susan Shaw	Drs. Elizabeth & Paul Stroble	Mr. & Mrs. John D. Weil & Pershing Place Foundation	
Janet Mulroy #	Scott Putney #	Kurt Rupe #	Dr. Mim Shelden & Lou Kinsey #	Dr. Pamela Stuerke #	Rita & David Wells	
Wilhelm & Ingrid Neuefeind #	Judy & Paul Putzel #	Douglas Rush & Janette Lohman #	Jenny & Walter Shifrin #	Dr. Donald Suggs	Ms. K. E. Wentzien #	
Cynthia & Rob Nevett	Brian Abel Ragen #	Dr. & Mrs. Joseph Ruwitch #	Dr. Amber Simpson ♪	Mr. & Mrs. Warren G. Sullivan	Gerald Wilemski #	
Dr. ♂ & Mrs. Matthew Newman #	Mr. ♂ & Mrs. B. Franklin Rassieur, Jr. #	Mrs. Harvey Saligman & The Linda & Harvey Saligman Charitable Foundation	Marjorie & Kenneth Smith	Betty & Jack Swanson #	Barbara McAfee Wohltman #	
Martha C. Nussbaum	Susan & John Rava # & Rava Family Fund of St. Louis Community Foundation	Alice Sargent	Kathy & Robin Smith #	Maria & Philip Taxman	Mr. & Mrs. Richard R. Woods & Heart of Oak Foundation, Inc.	
Kitty Pearl		Ann Scheuer	Dr. John Sopuch	Dr. & Mrs. Lawrence A. Taylor #	Susan & David Young #	
Douglas Pedersen #				Douglas M. & Sherida E. Tollefsen #		
				Emil & Marianne Unanue #		

♫ In Memoriam
* In-kind
2020 Ticket Donor
♪ Intermezzo Society

BOARD OF DIRECTORS



CHAIRS

- Noémi K. Neidorff**
Chairman
- Lelia J. Farr**
Vice-Chairman
- V. Raymond Stranghoener**
Vice-Chairman
- Sally S. Levy**
Secretary
- Mont S. Levy**
Treasurer
- Spencer B. Burke**
Immediate Past Chairman
- Donna Wilkinson**
Chairman Emerita

EXECUTIVE COMMITTEE

- Jim Berges
- Adrienne Davis
- Kim Eberlein
- Sara Fabick *
- Patricia G. Hecker ⚡
- Gina G. Hoagland
- Mrs. Ronald A. Holtman
- John H. Russell
- Robert L. Scharff, Jr.
- Rex Sinquefield
- Ann McFarland Sullins
- Stephen L. Trampe

MEMBERS OF THE BOARD OF DIRECTORS

- | | | |
|------------------------|--------------------------|------------------------|
| Tania Beasley-Jolly | Marcela Manjarrez | Lori Winters Samuels |
| Ashley Budde * | Heather Hunt-Ruddy | Joseph Shepard |
| Holly Benson * | Frank Jacobs | Thelma Steward |
| Barbara Bridgewater | Bettie Johnson | Dr. Elizabeth Stroble |
| Thriess Britton | Joanne Kohn | Dr. Donald M. Suggs |
| Jane Clark | Eugene Kornblum | Mary Susman |
| Robert H. Craft, Jr. * | Kenneth Kranzberg | Maria Guadalupe Taxman |
| Jamieson F. Craft * | James A. Krekeler | Franklin F. Wallis |
| Crystal Allen Dallas | J. David Levy, Jr. | Phoebe Dent Weil |
| Arnold W. Donald | Danny Ludeman | Robin Wentworth |
| Mrs. Irl F. Engelhardt | Michael Neidorff | Timothy Wentworth |
| John H. Ferring IV | Mabel L. Purkerson, M.D. | |
| Edes Gilbert | Win Reed | |
| Melissa Harper | Allison W. Roberts | |

LIFE MEMBERS

- Mrs. Eugene C. Adam ⚡
- Mrs. Stephen F. Brauer
- Richard W. Duesenberg
- Robert W. Feibel, M.D.
- Mrs. William B. Firestone
- Richard Gaddes
- Patricia G. Hecker ⚡
- Joseph Losos ⚡
- Charles MacKay
- Mrs. Robert S. McDorman
- Gyo Obata
- Gene W. Spector, M.D.
- Roma B. Wittcoff

* Ex-Officio Member
⚡ In Memoriam

ANNUAL STAFF

Andrew Jorgensen
General Director

James Robinson
Artistic Director

ADMINISTRATION

Michelle Myers
Director of Administration

Christopher Hauser
Volunteer Coordinator

Dawn Walter
Executive Assistant
to the General Director

ADVANCEMENT

Nicole Freber
Managing Director
of Advancement

DEVELOPMENT

Linda Schulte
Director of Development

Stacey Bregenzer
Senior Manager
of Donor Engagement

Cameron James
Manager of Special Events

Kait Neel
Manager of Donor
Communications

Laura Schlereth
Manager of Institutional Giving

MARKETING, PUBLIC RELATIONS, & BOX OFFICE

Anh Le
Director of Marketing &
Public Relations

Kara Koverman
Associate Director
for Audience Services

Kelly Glueck
Brand Manager &
Graphic Designer

Chantal Incandela
Press & Communications Manager

Macy White
Digital Marketing Manager

Sally Kurt
Assistant Box Office Manager

Monica Roscoe
Box Office Representative

ARTISTIC ADMINISTRATION

Paul Kilmer
Director of Artistic
Administration Emeritus

Patricia Racette
Artistic Director
of Young Artist Programs

Stephanie Nigus
Manager of Artistic Operations

Madalyn Mentor
Artistic Coordinator

EDUCATION & ENGAGEMENT

Allison Felter
Director of Education &
Engagement

Morgan Fisher
Education & Engagement
Coordinator

FINANCE

Mary Ip
Director of Finance

Barry Rowold
Accounting Manager

Ron Rohr
Accounting &
Payroll Administrator

Melanie Harrison
Bookkeeper

Tina Marvel
Accounting Clerk

PRODUCTION & OPERATIONS

Steve Ryan
Director of Production &
Operations

Maggy Bort
Production & Operations
Personnel Manager

Hans Fredrickson
Technical Director

Stacy Harris
Costume Shop Manager

Kendra Henry
Production & Operations
Business Manager

Eric Woolsey
Operations Manager

Lucie Garnett
Receptionist





OPERA THEATRE *of* SAINT LOUIS